

Coaxial Frequency Mixer

Level 7 (LO Power +7 dBm) 1 to 1500 MHz

ZP-5X+
ZP-5X



BNC version shown
CASE STYLE: GG60

Connectors	Model
BNC	ZP-5X+
SMA	ZP-5X-S(+)

+RoHS Compliant

The +Suffix identifies RoHS Compliance. See our web site for RoHS Compliance methodologies and qualifications

Maximum Ratings

Operating Temperature	-55°C to 100°C
Storage Temperature	-55°C to 100°C
RF Power	50mW
IF Current	40mA

Permanent damage may occur if any of these limits are exceeded.

Coaxial Connections

LO	L
RF	X
IF	R

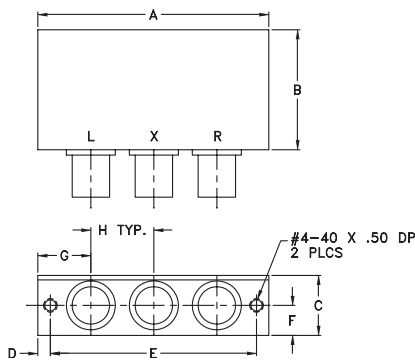
Features

- low conversion loss, 5.9 dB typ.
- wideband, 1 to 1500 MHz
- high L-R isolation, 40 dB typ., L-I, 45 dB typ.
- rugged shielded case

Applications

- VHF/UHF
- satellite distribution
- instrumentation

Outline Drawing



Outline Dimensions (inch/mm)

A	B	C	D	E	F	G	H	wt
2.31	1.20	.60	.125	2.062	.30	.53	16.00	.63 grams
58.67	30.48	15.24	3.18	52.37	7.62	13.46	16.00	75.0

Electrical Specifications

FREQUENCY (MHz)		CONVERSION LOSS (dB)				LO-RF ISOLATION (dB)						LO-IF ISOLATION (dB)					
LO/RF	IF	Mid-Band		Total Range	Max.	L		M		U		L		M		U	
f_L-f_U	\bar{X}	σ	Max.			Typ.	Min.	Typ.	Min.	Typ.	Min.	Typ.	Min.	Typ.	Min.	Typ.	Min.
1-1500	1-1000	5.9	0.10	7.0	9.0	60	40	40	20	28	17	60	45	45	25	38	20

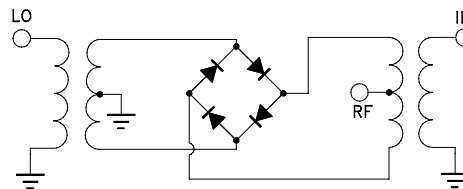
1 dB COMP.: +1 dBm typ.

L = low range [f_L to $10 f_L$] M = mid range [$10 f_L$ to $f_U/2$] U = upper range [$f_U/2$ to f_U]
m = mid band [$2f_L$ to $f_U/2$]

Typical Performance Data

Frequency (MHz)		Conversion Loss (dB)	Isolation L-R (dB)	Isolation L-I (dB)	VSWR RF Port (:1)	VSWR LO Port (:1)
RF	LO	LO +7dBm	LO +7dBm	LO +7dBm	LO +7dBm	LO +7dBm
1.01	31.01	5.81	76.49	72.03	1.25	2.94
2.13	32.13	5.83	74.70	73.03	1.25	2.78
10.96	40.96	5.80	63.50	69.26	1.26	2.54
56.50	86.50	5.80	50.82	61.44	1.28	2.46
160.38	130.38	5.88	43.16	54.92	1.37	2.37
216.07	186.07	5.81	40.68	53.11	1.43	2.38
250.80	220.80	5.85	39.60	53.11	1.48	2.36
337.90	307.90	5.93	36.86	51.90	1.58	2.37
455.25	425.25	6.15	33.77	50.56	1.70	2.44
528.42	498.42	6.01	31.68	49.21	1.75	2.45
613.35	583.35	6.23	30.05	50.49	1.78	2.49
750.00	720.00	6.34	27.83	48.82	1.78	2.64
826.36	796.36	6.30	26.21	49.29	1.75	2.69
900.00	870.00	6.30	25.22	49.14	1.69	2.79
1000.00	970.00	6.43	24.31	49.77	1.59	2.85
1200.00	1170.00	6.37	24.48	44.45	1.40	2.84
1292.29	1262.29	6.29	24.10	42.55	1.34	3.11
1400.00	1370.00	6.43	24.34	41.19	1.31	3.52
1450.00	1420.00	6.56	24.29	40.04	1.32	3.68
1500.00	1470.00	6.77	25.14	40.04	1.38	3.90

Electrical Schematic

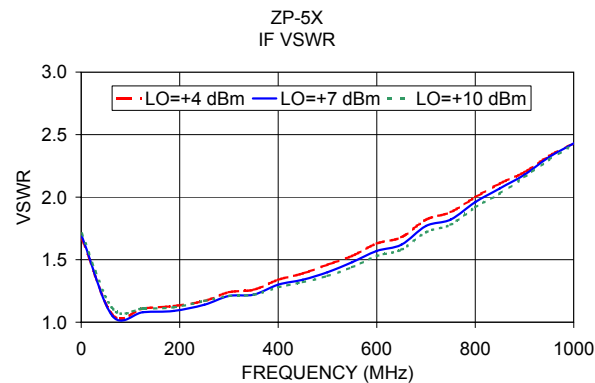
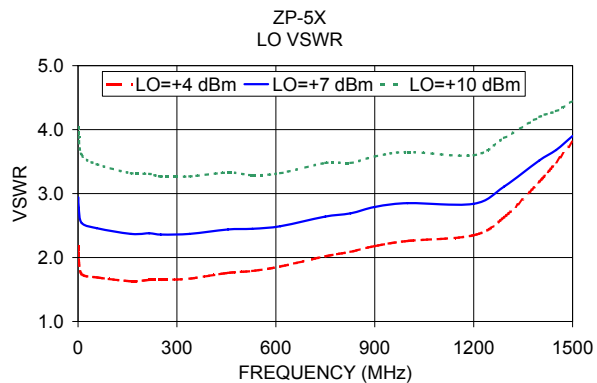
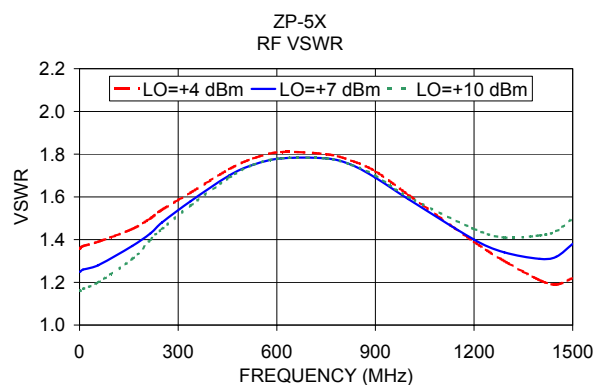
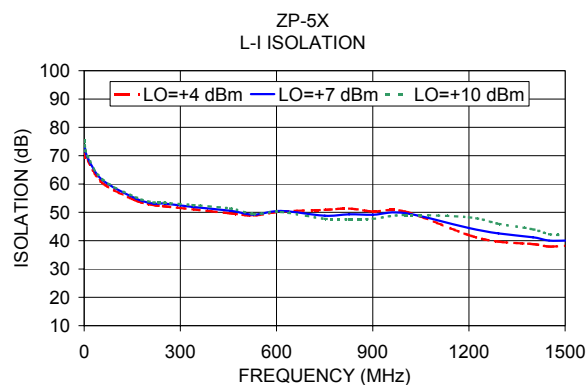
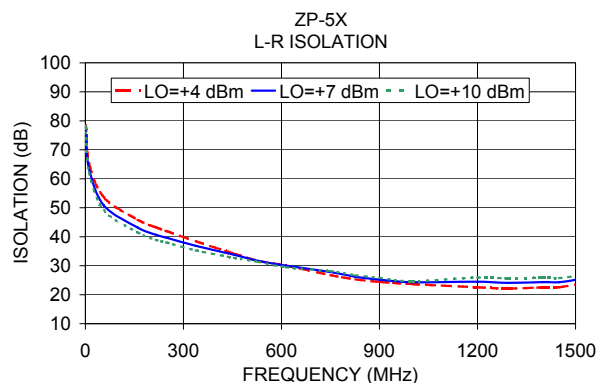
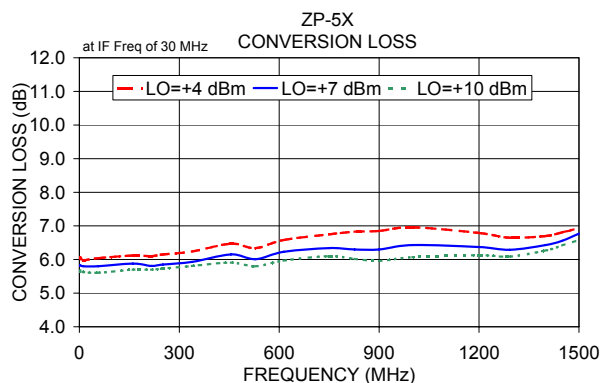


Notes

- Performance and quality attributes and conditions not expressly stated in this specification document are intended to be excluded and do not form a part of this specification document.
- Electrical specifications and performance data contained in this specification document are based on Mini-Circuit's applicable established test performance criteria and measurement instructions.
- The parts covered by this specification document are subject to Mini-Circuits standard limited warranty and terms and conditions (collectively, "Standard Terms"); Purchasers of this part are entitled to the rights and benefits contained therein. For a full statement of the Standard Terms and the exclusive rights and remedies thereunder, please visit Mini-Circuits' website at www.minicircuits.com/MCLStore/terms.jsp



Performance Charts



Notes

- A. Performance and quality attributes and conditions not expressly stated in this specification document are intended to be excluded and do not form a part of this specification document.
- B. Electrical specifications and performance data contained in this specification document are based on Mini-Circuit's applicable established test performance criteria and measurement instructions.
- C. The parts covered by this specification document are subject to Mini-Circuits standard limited warranty and terms and conditions (collectively, "Standard Terms"); Purchasers of this part are entitled to the rights and benefits contained therein. For a full statement of the Standard Terms and the exclusive rights and remedies thereunder, please visit Mini-Circuits' website at www.minicircuits.com/MCLStore/terms.jsp

